

\$0 - 10355 82 Av Nw, Edmonton

MLS® #E4052342

\$0

Bedroom, Bathroom, 2,138 sqft
Office on 0.00 Acres

Strathcona Junction, Edmonton, AB

Historic building in the heart of Whyte Avenue with upgraded facade, fully renovated common areas and upgraded HVAC. Sizes available include: 2,215 Sq. Ft. on the 2nd floor, 2138 sq. ft. on the 3rd floor, 1,130 Sq. Ft. on the 3rd floor and 2,873 Sq. Ft. on the lower level. Available immediately. Operating costs are \$14.79 inclusive of property tax, management, common area maintenance and utilities. Ideal for specialty retail, office, and creative spaces. Current Tenant incentive is one month of free net rent per year of the term signed!

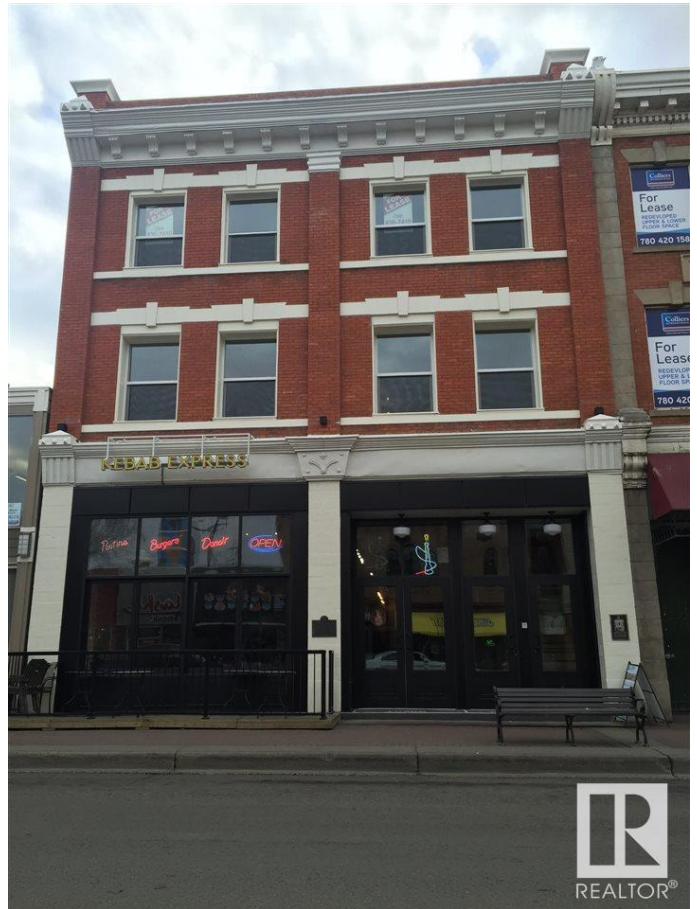
Built in 1960

Essential Information

| | |
|----------------|----------|
| MLS® # | E4052342 |
| Square Footage | 2,138 |
| Acres | 0.00 |
| Year Built | 1960 |
| Type | Office |

Community Information

| | |
|-------------|---------------------|
| Address | 10355 82 Av Nw |
| Area | Edmonton |
| Subdivision | Strathcona Junction |
| City | Edmonton |
| Province | AB |



Postal Code T6E 1Z9

Exterior

Construction Brick/Masonry

Additional Information

Date Listed February 24th, 2017

Zoning DC1

DATA IS DEEMED RELIABLE BUT IS NOT GUARANTEED ACCURATE BY THE REALTORS® ASSOCIATION OF EDMONTON. COPYRIGHT 2024 BY THE REALTORS® ASSOCIATION OF EDMONTON. ALL RIGHTS RESERVED.Trademarks are owned or controlled by the Canadian Real Estate Association (CREA) and identify real estate professionals who are members of CREA (REALTOR®, REALTORS®) and/or the quality of services they provide (MLS®, Multiple Listing Service®)

Listing information last updated on May 19th, 2024 at 1:31am MDT