

## \$855,000 - 530 280 Portage Close, Sherwood Park

MLS® #E4314383

**\$855,000**

0 Bedroom, 0.00 Bathroom,  
Office on 0.00 Acres

Buckingham Business Park, Sherwood Park,  
AB

3,175 sq.ft office/warehouse space. Storage yard space available for lease. Grade level loading door 12'x14'. 2 stage sump. Minimum 20' clear ceiling height, 30' ceiling height at the peak.

Built in 2013

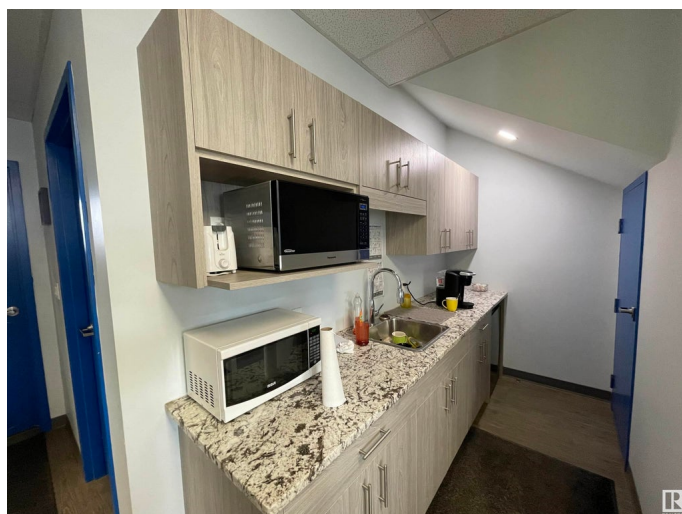
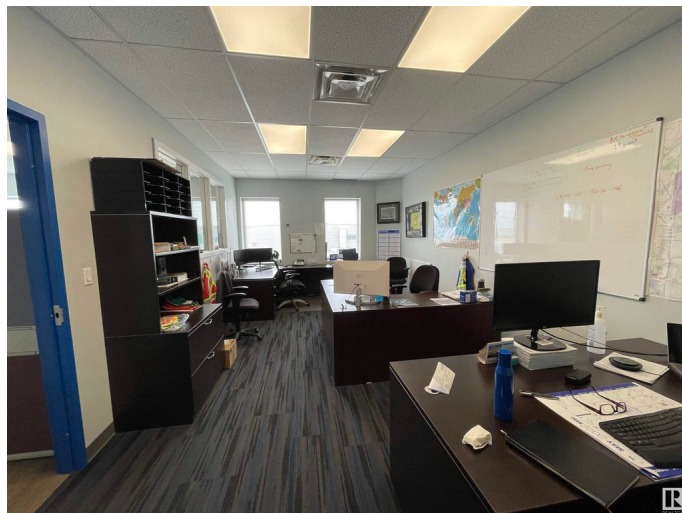
### Essential Information

|            |           |
|------------|-----------|
| MLS® #     | E4314383  |
| Price      | \$855,000 |
| Bathrooms  | 0.00      |
| Acres      | 0.00      |
| Year Built | 2013      |
| Type       | Office    |
| Status     | Active    |

### Community Information

|             |                          |
|-------------|--------------------------|
| Address     | 530 280 Portage Close    |
| Area        | Sherwood Park            |
| Subdivision | Buckingham Business Park |
| City        | Sherwood Park            |
| County      | ALBERTA                  |
| Province    | AB                       |
| Postal Code | T8H 2R6                  |

### Exterior



|              |             |
|--------------|-------------|
| Exterior     | Steel Frame |
| Construction | Steel Frame |

### **Additional Information**

|                |                      |
|----------------|----------------------|
| Date Listed    | September 21st, 2022 |
| Days on Market | 1021                 |
| Zoning         | Zone 25              |

DATA IS DEEMED RELIABLE BUT IS NOT GUARANTEED ACCURATE BY THE REALTORS® ASSOCIATION OF EDMONTON. COPYRIGHT 2025 BY THE REALTORS® ASSOCIATION OF EDMONTON. ALL RIGHTS RESERVED. Trademarks are owned or controlled by the Canadian Real Estate Association (CREA) and identify real estate professionals who are members of CREA (REALTOR®, REALTORS®) and/or the quality of services they provide (MLS®, Multiple Listing Service®)

Listing information last updated on July 8th, 2025 at 7:32am MDT