

# **\$650,000 - 6 51112 Rge Rd 260, Rural Parkland County**

MLS® #E4411111

**\$650,000**

0 Bedroom, 0.00 Bathroom,  
Rural on 1.87 Acres

None, Rural Parkland County, AB

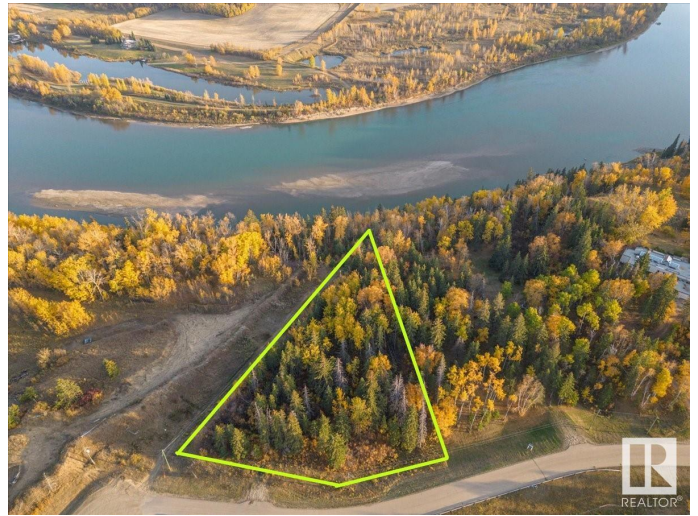
Opportunity to build your dream Country home with walkout basement on a 1.87 acre river valley lot, on the north shore of the North Saskatchewan river. Secluded yet very close to city of Edmonton. Only 18 minutes drive to Windermere; easy access to Anthony Henday, about 11 mins. Close to Blackhawk and Petroleum Golf and Country Club. Utilities, Gas and Electricity are available at the property line. Please check it out.

## **Essential Information**

MLS® #	E4411111
Price	\$650,000
Bathrooms	0.00
Acres	1.87
Type	Rural
Sub-Type	Vacant Lot/Land
Status	Active

## **Community Information**

Address	6 51112 Rge Rd 260
Area	Rural Parkland County
Subdivision	None
City	Rural Parkland County
County	ALBERTA
Province	AB
Postal Code	T7Y 1B2



**Exterior**

Exterior Features    Beach Access, Boating, Corner Lot, Golf Nearby, Ravine View, River Valley View, River View, Waterfront Property

**Additional Information**

Date Listed            October 21st, 2024  
Days on Market        248  
Zoning                  Zone 70

DATA IS DEEMED RELIABLE BUT IS NOT GUARANTEED ACCURATE BY THE REALTORS® ASSOCIATION OF EDMONTON. COPYRIGHT 2025 BY THE REALTORS® ASSOCIATION OF EDMONTON. ALL RIGHTS RESERVED.Trademarks are owned or controlled by the Canadian Real Estate Association (CREA) and identify real estate professionals who are members of CREA (REALTOR®, REALTORS®) and/or the quality of services they provide (MLS®, Multiple Listing Service®)  
Listing information last updated on June 26th, 2025 at 9:32am MDT