

# \$284,900 - Range Rd 263 Twp Rd 400, Rural Lacombe County

MLS® #E4419491

**\$284,900**

0 Bedroom, 0.00 Bathroom,  
Rural on 4.00 Acres

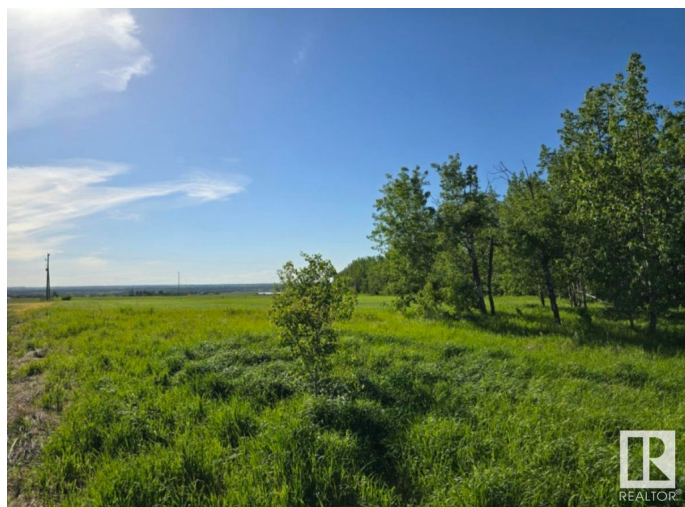
None, Rural Lacombe County, AB

Looking for the perfect blend of tranquility and convenience near Lacombe? This recently subdivided 4-acre parcel offers an ideal canvas for your dream home. With power and gas available at the road, this property is ready for your custom design. The land features a charming ravine and a small gulley, providing natural beauty and unique character to the site. A mix of open space and mature trees allows for endless possibilities—whether you envision gardens, outdoor living spaces, or a private retreat surrounded by nature. Nestled in Central Alberta, with Agricultural zoning, this acreage offers the serenity of country living with easy access to the vibrant community of Lacombe, combining the best of rural freedoms and nearby amenities.

## Essential Information

MLS® #	E4419491
Price	\$284,900
Bathrooms	0.00
Acres	4.00
Type	Rural
Sub-Type	Vacant Lot/Land
Status	Active

## Community Information



Address	Range Rd 263 Twp Rd 400
Area	Rural Lacombe County
Subdivision	None
City	Rural Lacombe County
County	ALBERTA
Province	AB
Postal Code	T4E 2M8

### **Exterior**

Exterior Features Private Setting, Ravine View, Sloping Lot, Treed Lot, View City

### **Additional Information**

Date Listed	January 27th, 2025
Days on Market	88
Zoning	Zone RUR6

DATA IS DEEMED RELIABLE BUT IS NOT GUARANTEED ACCURATE BY THE REALTORS® ASSOCIATION OF EDMONTON. COPYRIGHT 2025 BY THE REALTORS® ASSOCIATION OF EDMONTON. ALL RIGHTS RESERVED. Trademarks are owned or controlled by the Canadian Real Estate Association (CREA) and identify real estate professionals who are members of CREA (REALTOR®, REALTORS®) and/or the quality of services they provide (MLS®, Multiple Listing Service®)

Listing information last updated on April 25th, 2025 at 5:47pm MDT