

## \$644,900 - 186 Corral Circle, Sherwood Park

MLS® #E4424664

**\$644,900**

3 Bedroom, 2.50 Bathroom, 2,149 sqft

Single Family on 0.00 Acres

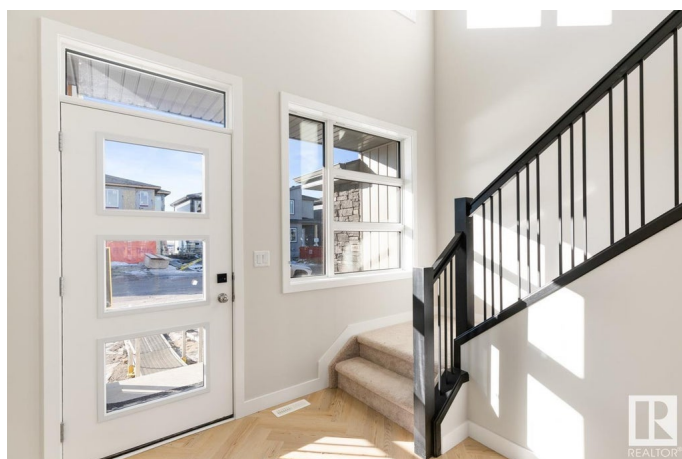
Cambrian, Sherwood Park, AB

The Lozano is a modern family home that you will be PROUD to show off, filled with natural light & elegant functionality. This 2149 sqft, 2 Storey home offers 3 bedrooms, 2.5 baths & DOUBLE garage. The "Ethereal Zen" design style will WOW you as soon as you enter the main level with a magazine worthy kitchen that offers plenty of cabinets, RI for gas stove, WI pantry & island that over looks the dining & living area bursting with natural light. Guest bath compliments the layout. Moving upstairs you will find a king sized primary suite featuring vaulted ceilings, Walk in closet & 5pc ensuite. 2 bdrms are generous in size, a 4pc bath, laundry & media room complete this stylish home with room to grow! EXPLORE the multiple parks, playgrounds & 8kms of ravine trails through Oldman Creek! It will also be the home to future schools & shopping. Photos may not reflect the exact home for sale, as some are virtually staged or show design selections.

Built in 2025

### Essential Information

MLS® #	E4424664
Price	\$644,900
Bedrooms	3
Bathrooms	2.50



Full Baths	2
Half Baths	1
Square Footage	2,149
Acres	0.00
Year Built	2025
Type	Single Family
Sub-Type	Detached Single Family
Style	2 Storey
Status	Active

### Community Information

Address	186 Corral Circle
Area	Sherwood Park
Subdivision	Cambrian
City	Sherwood Park
County	ALBERTA
Province	AB
Postal Code	T0B 0B0

### Amenities

Amenities	Vaulted Ceiling, Vinyl Windows
Parking	Double Garage Attached

### Interior

Interior Features	ensuite bathroom
Appliances	See Remarks
Heating	Forced Air-1, Natural Gas
Stories	2
Has Basement	Yes
Basement	Full, Unfinished

### Exterior

Exterior	Wood, Vinyl
Exterior Features	Schools, Shopping Nearby, See Remarks
Roof	Asphalt Shingles
Construction	Wood, Vinyl
Foundation	Concrete Perimeter

### School Information

Elementary	Westboro
Middle	Clover Bar JR
High	Salisbury

### **Additional Information**

Date Listed	March 5th, 2025
Days on Market	55
Zoning	Zone 25

DATA IS DEEMED RELIABLE BUT IS NOT GUARANTEED ACCURATE BY THE REALTORS® ASSOCIATION OF EDMONTON. COPYRIGHT 2025 BY THE REALTORS® ASSOCIATION OF EDMONTON. ALL RIGHTS RESERVED. Trademarks are owned or controlled by the Canadian Real Estate Association (CREA) and identify real estate professionals who are members of CREA (REALTOR®, REALTORS®) and/or the quality of services they provide (MLS®, Multiple Listing Service®)

Listing information last updated on April 29th, 2025 at 12:47pm MDT