

\$158,500 - 218 10235 112 Street, Edmonton

MLS® #E4429758

\$158,500

1 Bedroom, 1.00 Bathroom, 679 sqft

Condo / Townhouse on 0.00 Acres

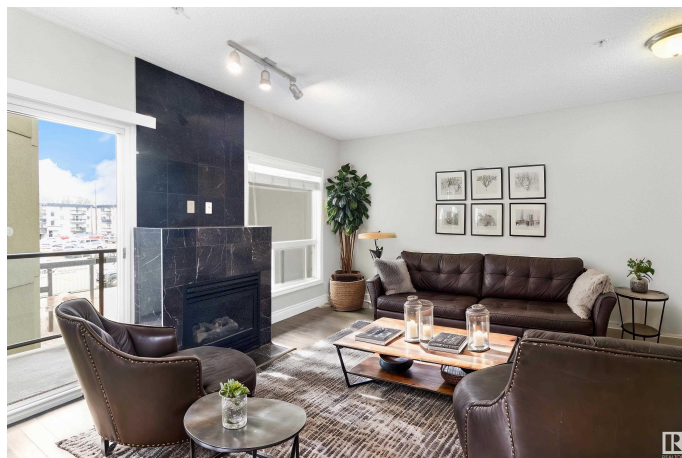
Westwood, Edmonton, AB

Welcome to The Imperial, located in the heart of Westwood (formerly Oliver), one of Edmonton's most vibrant communities. This west-facing 1-bedroom, 1-bathroom condo on the second floor blends comfort and style with marble and hardwood floors, in-suite laundry, and a custom closet in the primary bedroom. The private balcony overlooks the front of the building with a view of the community. A heated underground parking stall adds convenience during Edmonton winters. Exceptionally well maintained, this home is clean, cared for, and shows pride of ownership. Ideally located for those who enjoy walkable city living—just minutes from Grant MacEwan University, Victoria School of the Arts, and NorQuest College. Nearby parks include Oliver Park and Paul Kane Park, along with easy access to cafés, restaurants, shops, grocery stores, public transit, Jasper Avenue, and the River Valley trail system. An excellent fit for a first-time homebuyer, student, or investor.

Built in 2007

Essential Information

MLS® #	E4429758
Price	\$158,500
Bedrooms	1



Bathrooms	1.00
Full Baths	1
Square Footage	679
Acres	0.00
Year Built	2007
Type	Condo / Townhouse
Sub-Type	Lowrise Apartment
Style	Single Level Apartment
Status	Active

Community Information

Address	218 10235 112 Street
Area	Edmonton
Subdivision	W&hkw&ant&win
City	Edmonton
County	ALBERTA
Province	AB
Postal Code	T6A 3B4

Amenities

Amenities	On Street Parking, Closet Organizers, Intercom, No Animal Home, No Smoking Home, Parking-Visitor, Secured Parking, Security Door
Parking Spaces	1
Parking	Underground

Interior

Appliances	Dishwasher-Built-In, Dryer, Microwave Hood Fan, Refrigerator, Stove-Electric, Washer, Window Coverings
Heating	In Floor Heat System, Natural Gas
Fireplace	Yes
Fireplaces	Marble Surround, Tile Surround
# of Stories	6
Stories	1
Has Basement	Yes
Basement	None, No Basement

Exterior

Exterior	Steel, Stucco
Exterior Features	Back Lane, Playground Nearby, Public Transportation, Schools,

	Shopping Nearby
Roof	Tar & Gravel
Construction	Steel, Stucco
Foundation	Concrete Perimeter

Additional Information

Date Listed	April 7th, 2025
Days on Market	22
Zoning	Zone 12
Condo Fee	\$476

DATA IS DEEMED RELIABLE BUT IS NOT GUARANTEED ACCURATE BY THE REALTORS® ASSOCIATION OF EDMONTON. COPYRIGHT 2025 BY THE REALTORS® ASSOCIATION OF EDMONTON. ALL RIGHTS RESERVED. Trademarks are owned or controlled by the Canadian Real Estate Association (CREA) and identify real estate professionals who are members of CREA (REALTOR®, REALTORS®) and/or the quality of services they provide (MLS®, Multiple Listing Service®)

Listing information last updated on April 28th, 2025 at 10:47pm MDT