

Courtesy Of Zach Kohn Of Initia Real Estate

\$164,900 - 111 3610 43 Ave Avenue, Edmonton

MLS® #E4432148

\$164,900

3 Bedroom, 2.00 Bathroom, 1,023 sqft
Condo / Townhouse on 0.00 Acres

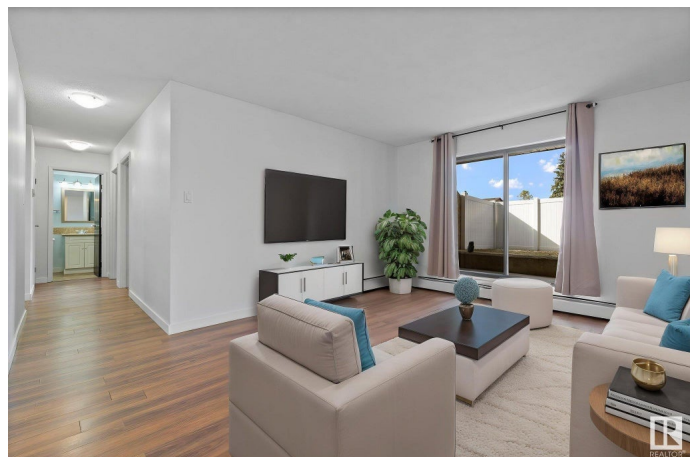
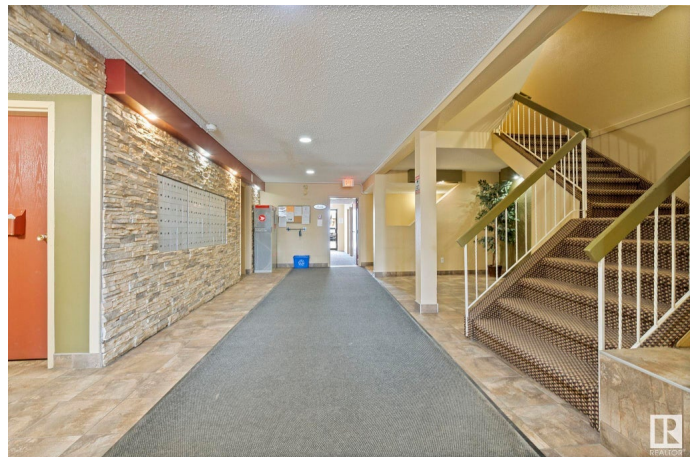
Kiniski Gardens, Edmonton, AB

Welcome to this beautifully renovated (2023) 3 bedroom, 2 bathroom ground-level unit offering 1,022 sq ft of comfortable living space. Enjoy the ease of direct main-level access—no waiting for elevators—and the convenience of being the closest unit just steps from the laundry room (one laundry room per floor). Perfect for families, this home features a large living and dining area, an inviting patio, and access to a partially fenced green space that's great for kids and small pets. Located in a well-maintained building with an assigned parking stall (with power), this unit is close to everything: shopping, parks, recreation centres, golf, and schools of all levels. Quick access to major routes like the Whitemud and Anthony Henday make commuting a breeze. A rare find with unbeatable value!

Built in 1982

Essential Information

MLS® #	E4432148
Price	\$164,900
Bedrooms	3
Bathrooms	2.00
Full Baths	2
Square Footage	1,023
Acres	0.00



Year Built	1982
Type	Condo / Townhouse
Sub-Type	Lowrise Apartment
Style	Single Level Apartment
Status	Active

Community Information

Address	111 3610 43 Ave Avenue
Area	Edmonton
Subdivision	Kiniski Gardens
City	Edmonton
County	ALBERTA
Province	AB
Postal Code	T6L 5T2

Amenities

Amenities	Detectors Smoke, Hot Water Natural Gas, Parking-Plug-Ins
Parking	Stall

Interior

Appliances	Dishwasher-Built-In, Fan-Ceiling, Hood Fan, Refrigerator, Stove-Electric, Curtains and Blinds
Heating	Baseboard, Water
# of Stories	4
Stories	1
Has Basement	Yes
Basement	None, No Basement

Exterior

Exterior	Wood, Stucco
Exterior Features	Golf Nearby, Playground Nearby, Schools, Shopping Nearby, See Remarks
Roof	Flat, Tar & Gravel
Construction	Wood, Stucco
Foundation	Concrete Perimeter

School Information

Elementary	Julia Kiniski
Middle	Thelma Chalifoux

High

J Percy Page

Additional Information

Date Listed April 23rd, 2025

Days on Market 3

Zoning Zone 29

Condo Fee \$483

DATA IS DEEMED RELIABLE BUT IS NOT GUARANTEED ACCURATE BY THE REALTORS® ASSOCIATION OF EDMONTON. COPYRIGHT 2025 BY THE REALTORS® ASSOCIATION OF EDMONTON. ALL RIGHTS RESERVED. Trademarks are owned or controlled by the Canadian Real Estate Association (CREA) and identify real estate professionals who are members of CREA (REALTOR®, REALTORS®) and/or the quality of services they provide (MLS®, Multiple Listing Service®)

Listing information last updated on April 26th, 2025 at 8:17pm MDT