

## \$449,900 - 8320 138 Avenue, Edmonton

MLS® #E4433129

**\$449,900**

5 Bedroom, 2.50 Bathroom, 1,227 sqft  
Single Family on 0.00 Acres

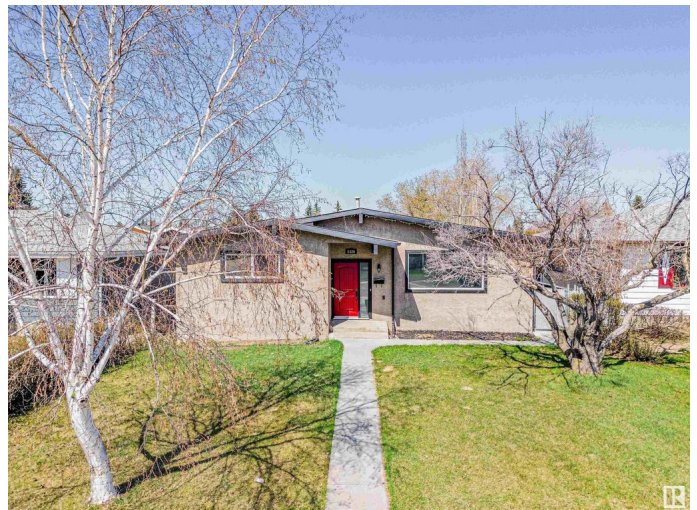
Northmount (Edmonton), Edmonton, AB

This 5 Bedroom 2.5 Bath Beauty is a 1226 sq ft bungalow professionally renovated top to bottom and located in a Quiet Neighbourhood. Bright open-concept living/dining, stunning kitchen with New Microwave, Granite counters, soft-close cabinets & Stainless Steel appliances. Massive primary bedroom with double closets & 2 piece ensuite, plus 2 more bedrooms AND updated 4-pc bath on the main floor. You will enjoy the huge Fully finished basement with large rec (family) room, 2 more bedrooms & another 4-pc bath. This home Features newer windows, NEW carpet and flooring, light Fixtures, fresh paint, newer roof (4 yrs), front-load laundry, and security system. There is an OVERSIZED 26x30 garage with 10 ft ceilings & outlets throughout—ideal for hobbyists or extra storage. Extra RV or vehicle parking in the back. Patio and huge backyard with a Shed for you to enjoy. This is a Great neighborhood and close to schools, parks & shopping. A must-see!

Built in 1970

### Essential Information

MLS® #	E4433129
Price	\$449,900
Bedrooms	5



Bathrooms	2.50
Full Baths	2
Half Baths	1
Square Footage	1,227
Acres	0.00
Year Built	1970
Type	Single Family
Sub-Type	Detached Single Family
Style	Bungalow
Status	Active

### Community Information

Address	8320 138 Avenue
Area	Edmonton
Subdivision	Northmount (Edmonton)
City	Edmonton
County	ALBERTA
Province	AB
Postal Code	T5E 2A5

### Amenities

Amenities	Closet Organizers
Parking Spaces	5
Parking	220 Volt Wiring, Double Garage Detached, Over Sized, RV Parking, See Remarks

### Interior

Interior Features	ensuite bathroom
Appliances	Dishwasher-Built-In, Dryer, Refrigerator, Storage Shed, Stove-Electric, Washer, Window Coverings
Heating	Forced Air-1, Natural Gas
Stories	2
Has Basement	Yes
Basement	Full, Finished

### Exterior

Exterior	Wood, Stucco
Exterior Features	Fenced, Flat Site, Landscaped, Park/Reserve, Playground Nearby, Public Swimming Pool, Schools, Shopping Nearby

Roof	Asphalt Shingles
Construction	Wood, Stucco
Foundation	Concrete Perimeter

**Additional Information**

Date Listed	April 28th, 2025
Days on Market	66
Zoning	Zone 02

DATA IS DEEMED RELIABLE BUT IS NOT GUARANTEED ACCURATE BY THE REALTORS® ASSOCIATION OF EDMONTON. COPYRIGHT 2025 BY THE REALTORS® ASSOCIATION OF EDMONTON. ALL RIGHTS RESERVED.Trademarks are owned or controlled by the Canadian Real Estate Association (CREA) and identify real estate professionals who are members of CREA (REALTOR®, REALTORS®) and/or the quality of services they provide (MLS®, Multiple Listing Service®)

Listing information last updated on July 3rd, 2025 at 11:18am MDT