

\$535,000 - 8936 153 Street, Edmonton

MLS® #E4433272

\$535,000

3 Bedroom, 2.00 Bathroom, 917 sqft

Single Family on 0.00 Acres

Jasper Park, Edmonton, AB

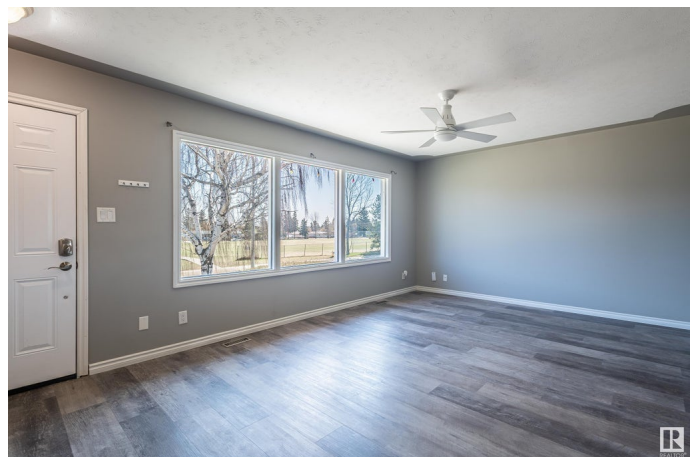
LEGAL BASEMENT SUITE. Welcome this to this 3 bedroom bungalow located in a quiet neighborhood right across from a school! This home is a rare find. The 27' x 28' oversized double garage is insulated, heated, and paired with a large shed for even more storage. There's also a chain-link fence with a gate leading into the west-facing backyard – perfect for storing a boat, trailer, or extra toys! Inside, the home is bright and cheery with a great layout, an updated kitchen featuring quartz countertops, an undermount double sink, and stainless steel appliances. The renovated main bathroom includes quartz counters, a large soaker tub, and a stylish tile surround. Downstairs, the suite has its own kitchen, living room, spacious bedroom, and bathroom – ideal for extra income or extended family. Two separate furnaces and relatively new shingles add even more value and peace of mind. An amazing buy for investors, first-time buyers, or anyone wanting more space and opportunity! Some photos virtually staged.

Built in 1958

Essential Information

MLS® # E4433272

Price \$535,000



Bedrooms	3
Bathrooms	2.00
Full Baths	2
Square Footage	917
Acres	0.00
Year Built	1958
Type	Single Family
Sub-Type	Detached Single Family
Style	Bungalow
Status	Active

Community Information

Address	8936 153 Street
Area	Edmonton
Subdivision	Jasper Park
City	Edmonton
County	ALBERTA
Province	AB
Postal Code	T6E 0S9

Amenities

Amenities	See Remarks
Parking	Double Garage Detached, Over Sized

Interior

Appliances	Dishwasher-Built-In, Dryer, Fan-Ceiling, Hood Fan, Microwave Hood Fan, Washer, Refrigerators-Two, Stoves-Two
Heating	Forced Air-2, Natural Gas
Stories	2
Has Suite	Yes
Has Basement	Yes
Basement	Full, Finished

Exterior

Exterior	Wood, Vinyl
Exterior Features	Fenced, Landscaped, Schools, Shopping Nearby
Roof	Asphalt Shingles
Construction	Wood, Vinyl
Foundation	Concrete Perimeter

School Information

Elementary	James Gibbons School
Middle	Stratford School
High	Jasper Place School

Additional Information

Date Listed	April 28th, 2025
Days on Market	11
Zoning	Zone 22

DATA IS DEEMED RELIABLE BUT IS NOT GUARANTEED ACCURATE BY THE REALTORS® ASSOCIATION OF EDMONTON. COPYRIGHT 2025 BY THE REALTORS® ASSOCIATION OF EDMONTON. ALL RIGHTS RESERVED.Trademarks are owned or controlled by the Canadian Real Estate Association (CREA) and identify real estate professionals who are members of CREA (REALTOR®, REALTORS®) and/or the quality of services they provide (MLS®, Multiple Listing Service®)

Listing information last updated on May 9th, 2025 at 4:03pm MDT