

\$250,000 - Na Avenue, Spruce Grove

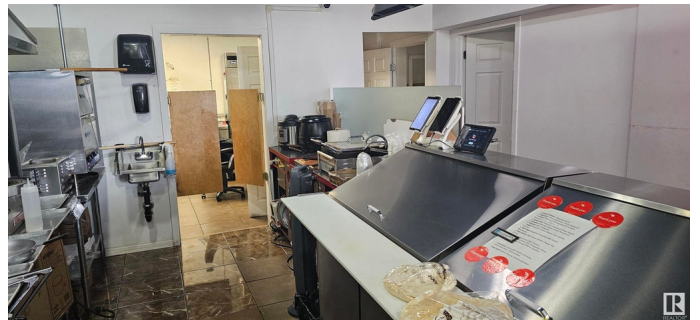
MLS® #E4433864

\$250,000

0 Bedroom, 0.00 Bathroom,
Business on 0.00 Acres

City Centre, Spruce Grove, AB

Donair and Pizza restaurant operating for over 26 years. Loyal clients and great reputation in the community. Efficient operation with maximum use of space, easy to operate menu. All sauces are made in house providing a unique taste and cost control.



Essential Information

MLS® #	E4433864
Price	\$250,000
Bathrooms	0.00
Acres	0.00
Type	Business
Status	Active

Community Information

Address	Na Avenue
Area	Spruce Grove
Subdivision	City Centre
City	Spruce Grove
County	ALBERTA
Province	AB
Postal Code	T7X 3X2

Additional Information

Date Listed	May 1st, 2025
Days on Market	56

Zoning

Zone 91

DATA IS DEEMED RELIABLE BUT IS NOT GUARANTEED ACCURATE BY THE REALTORS® ASSOCIATION OF EDMONTON. COPYRIGHT 2025 BY THE REALTORS® ASSOCIATION OF EDMONTON. ALL RIGHTS RESERVED. Trademarks are owned or controlled by the Canadian Real Estate Association (CREA) and identify real estate professionals who are members of CREA (REALTOR®, REALTORS®) and/or the quality of services they provide (MLS®, Multiple Listing Service®)

Listing information last updated on June 26th, 2025 at 11:02am MDT