

\$139,900 - 108 1945 105 Street, Edmonton

MLS® #E4435395

\$139,900

2 Bedroom, 1.50 Bathroom, 1,045 sqft

Condo / Townhouse on 0.00 Acres

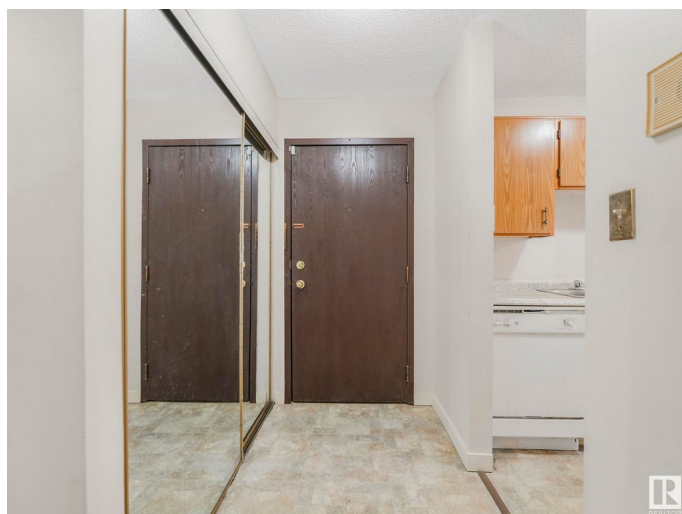
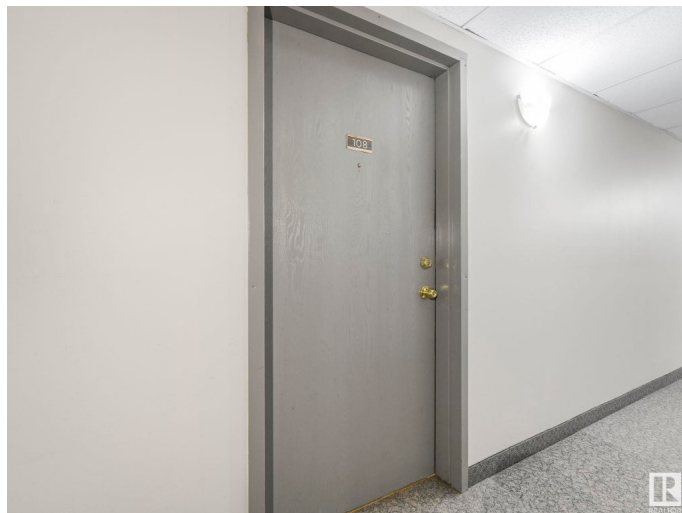
Keheewin, Edmonton, AB

Location, location, location! Welcome to this 2 bedroom 1.5 bathroom condo in South Edmonton across from an elementary school and minutes away from South Edmonton Common! Stepping into this unit you have an open kitchen with lots of cupboard/counter space and a dishwasher, open dining and living room. From your living room you have easy access to your ground floor covered terrace. Down the hall is a spacious bedroom with a closet and then your primary bedroom with a closet and 2 pc ensuite. At the end of the hall is your main 4 pc bathroom. The unit includes in-unit storage with laundry hookups for a potential washer/dryer. The condo fee of \$638.50 includes water/heat, maintenance and 1 parking stall out front. Bus stop outside of unit, mins from Century LRT, QE2, Anthony Henday or the Airport! If you are looking to own an affordable 2 bedroom condo in South Edmonton, this is the one!

Built in 1981

Essential Information

MLS® #	E4435395
Price	\$139,900
Bedrooms	2
Bathrooms	1.50
Full Baths	1



Half Baths	1
Square Footage	1,045
Acres	0.00
Year Built	1981
Type	Condo / Townhouse
Sub-Type	Lowrise Apartment
Style	Single Level Apartment
Status	Active

Community Information

Address	108 1945 105 Street
Area	Edmonton
Subdivision	Keheewin
City	Edmonton
County	ALBERTA
Province	AB
Postal Code	T6J 5N6

Amenities

Amenities	Off Street Parking, Patio, Security Door
Parking Spaces	1
Parking	Stall

Interior

Interior Features	ensuite bathroom
Appliances	Dishwasher-Built-In, Refrigerator, Stove-Electric
Heating	Baseboard, Hot Water, Natural Gas
# of Stories	4
Stories	1
Has Basement	Yes
Basement	None, No Basement

Exterior

Exterior	Wood, Vinyl
Exterior Features	Flat Site, Landscaped, Level Land, Playground Nearby, Schools, Shopping Nearby
Roof	Asphalt Shingles
Construction	Wood, Vinyl
Foundation	Concrete Perimeter

School Information

Elementary	Keheewin School
Middle	D.S. MacKenzie School
High	Harry Ainlay School

Additional Information

Date Listed	May 8th, 2025
Days on Market	3
Zoning	Zone 16
Condo Fee	\$639

DATA IS DEEMED RELIABLE BUT IS NOT GUARANTEED ACCURATE BY THE REALTORS® ASSOCIATION OF EDMONTON. COPYRIGHT 2025 BY THE REALTORS® ASSOCIATION OF EDMONTON. ALL RIGHTS RESERVED.Trademarks are owned or controlled by the Canadian Real Estate Association (CREA) and identify real estate professionals who are members of CREA (REALTOR®, REALTORS®) and/or the quality of services they provide (MLS®, Multiple Listing Service®)

Listing information last updated on May 11th, 2025 at 11:17am MDT