

\$349,000 - 83 1428 Hodgson Way, Edmonton

MLS® #E4435410

\$349,000

3 Bedroom, 2.50 Bathroom, 1,286 sqft

Condo / Townhouse on 0.00 Acres

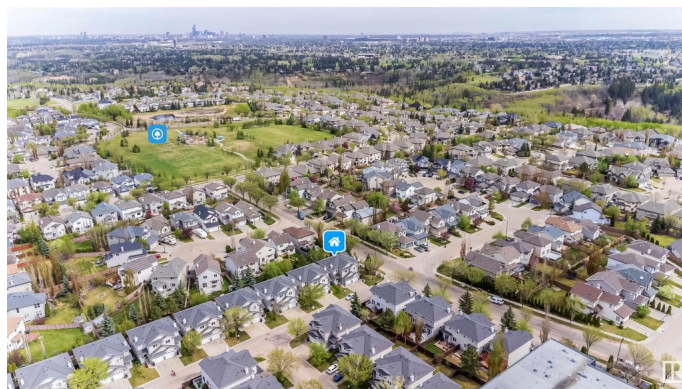
Hodgson, Edmonton, AB

Welcome to the charming community of Hodgson! This freshly painted 3-bedroom, 2.5-bath half duplex in Whitemud Terrace offers comfort, style, and convenience. Recent updates include some new lighting fixtures and newer stainless steel appliances in a bright kitchen with white cabinetry and granite island. Enjoy gatherings on the newer wooden deck in your fenced, low-maintenance yard. The main floor features easy-care laminate, while upstairs you'll find three spacious bedrooms, including a primary suite with a double closet and private ensuite. The basement is unfinished and ready for your ideas. Situated close to parks, shopping, public transit, and more in this well maintained complex with low condo fees. A perfect fit for first-time buyers or savvy investors!

Built in 2005

Essential Information

| | |
|----------------|-----------|
| MLS® # | E4435410 |
| Price | \$349,000 |
| Bedrooms | 3 |
| Bathrooms | 2.50 |
| Full Baths | 2 |
| Half Baths | 1 |
| Square Footage | 1,286 |
| Acres | 0.00 |



| | |
|------------|-------------------|
| Year Built | 2005 |
| Type | Condo / Townhouse |
| Sub-Type | Half Duplex |
| Style | 2 Storey |
| Status | Active |

Community Information

| | |
|-------------|---------------------|
| Address | 83 1428 Hodgson Way |
| Area | Edmonton |
| Subdivision | Hodgson |
| City | Edmonton |
| County | ALBERTA |
| Province | AB |
| Postal Code | T6R 3P8 |

Amenities

| | |
|-----------|---|
| Amenities | Deck, Detectors Smoke, No Smoking Home, See Remarks |
| Parking | Single Garage Attached |

Interior

| | |
|-------------------|---|
| Interior Features | ensuite bathroom |
| Appliances | Dishwasher-Built-In, Dryer, Garage Control, Garage Opener, Hood Fan, Oven-Microwave, Refrigerator, Stove-Electric, Washer, Window Coverings |
| Heating | Forced Air-1, Natural Gas |
| Stories | 2 |
| Has Basement | Yes |
| Basement | Full, Unfinished |

Exterior

| | |
|-------------------|---|
| Exterior | Wood, Vinyl |
| Exterior Features | Fenced, Golf Nearby, Playground Nearby, Public Transportation |
| Roof | Asphalt Shingles |
| Construction | Wood, Vinyl |
| Foundation | Concrete Perimeter |

Additional Information

| | |
|----------------|---------------|
| Date Listed | May 9th, 2025 |
| Days on Market | 1 |

| | |
|----------------|----------|
| Zoning | Zone 14 |
| HOA Fees | 92 |
| HOA Fees Freq. | Annually |
| Condo Fee | \$161 |

DATA IS DEEMED RELIABLE BUT IS NOT GUARANTEED ACCURATE BY THE REALTORS® ASSOCIATION OF EDMONTON. COPYRIGHT 2025 BY THE REALTORS® ASSOCIATION OF EDMONTON. ALL RIGHTS RESERVED. Trademarks are owned or controlled by the Canadian Real Estate Association (CREA) and identify real estate professionals who are members of CREA (REALTOR®, REALTORS®) and/or the quality of services they provide (MLS®, Multiple Listing Service®)

Listing information last updated on May 10th, 2025 at 4:02pm MDT