

\$365,000 - 3 26414 Twp Road 515 A, Rural Parkland County

MLS® #E4436122

\$365,000

0 Bedroom, 0.00 Bathroom,
Rural on 3.73 Acres

Alpine Acres, Rural Parkland County, AB

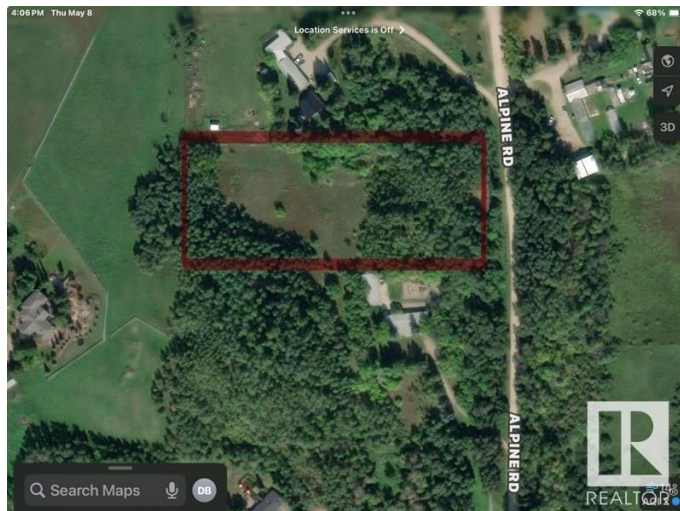
Majestic pines are found on this beautiful 3.73 acres located in sought after Alpine Acres. Located about 9 km from Edmonton, you will have no problem finding the perfect location to build your dream home. The property also has an open meadow, is fenced, and has an abandoned well. Easy access to Spruce Grove, Devon and Edmonton.

Essential Information

MLS® #	E4436122
Price	\$365,000
Bathrooms	0.00
Acres	3.73
Type	Rural
Sub-Type	Vacant Lot/Land
Status	Active

Community Information

Address	3 26414 Twp Road 515 A
Area	Rural Parkland County
Subdivision	Alpine Acres
City	Rural Parkland County
County	ALBERTA
Province	AB
Postal Code	T7Y 1E3



Exterior

Exterior Features Fenced, Private Setting, Treed Lot

Additional Information

Date Listed May 13th, 2025
Days on Market 21
Zoning Zone 90

DATA IS DEEMED RELIABLE BUT IS NOT GUARANTEED ACCURATE BY THE REALTORS® ASSOCIATION OF EDMONTON. COPYRIGHT 2025 BY THE REALTORS® ASSOCIATION OF EDMONTON. ALL RIGHTS RESERVED.Trademarks are owned or controlled by the Canadian Real Estate Association (CREA) and identify real estate professionals who are members of CREA (REALTOR®, REALTORS®) and/or the quality of services they provide (MLS®, Multiple Listing Service®)
Listing information last updated on June 3rd, 2025 at 4:47am MDT