

\$449,900 - #11 61501 Highway 41, Rural Bonnyville M.D.

MLS® #E4436455

\$449,900

0 Bedroom, 0.00 Bathroom,
Industrial on 0.00 Acres

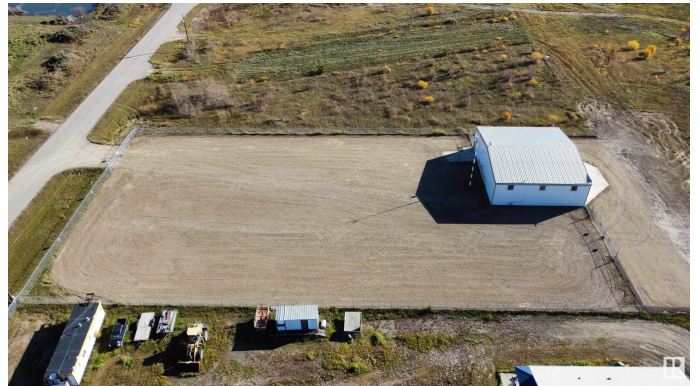
None, Rural Bonnyville M.D., AB

SHOP for SALE or LEASE in Aurora Borealis!
This 2008 steel frame 4300 sq.ft shop is conveniently located right on highway 41 just on the north side on the Bonnyville regional airport, only 2 miles North of Bonnyville! Plenty of parking and storage space with a 1.5 acre parcel fully graveled and fenced with 6â€™™ chain-link! The main shop area is open and accessible through the front with a 12x14 overhead door or from the rear with a 50 wide x 16 high aviation scissor style door. There is a 2 ton single rail crane installed with manual chain hoist. Heated with overhead radiant tube heaters. This property is completely serviced with power, gas, 3200 Gallon sewage holding tank and 2100 Gallon cistern for water. There is an upper mezzanine that houses the office space and below there is a 3 piece bathroom with shower. Great affordable shop space for your company to call home base!

Built in 2008

Essential Information

MLS® #	E4436455
Price	\$449,900
Bathrooms	0.00
Acres	0.00
Year Built	2008
Type	Industrial



Status Active

Community Information

Address #11 61501 Highway 41
Area Rural Bonnyville M.D.
Subdivision None
City Rural Bonnyville M.D.
County ALBERTA
Province AB
Postal Code T9N 2G9

Exterior

Exterior Metal Clad, Steel Frame
Construction Metal Clad, Steel Frame

Additional Information

Date Listed May 14th, 2025
Days on Market 8
Zoning Zone 60

DATA IS DEEMED RELIABLE BUT IS NOT GUARANTEED ACCURATE BY THE REALTORS® ASSOCIATION OF EDMONTON. COPYRIGHT 2025 BY THE REALTORS® ASSOCIATION OF EDMONTON. ALL RIGHTS RESERVED.Trademarks are owned or controlled by the Canadian Real Estate Association (CREA) and identify real estate professionals who are members of CREA (REALTOR®, REALTORS®) and/or the quality of services they provide (MLS®, Multiple Listing Service®)
Listing information last updated on May 22nd, 2025 at 4:32pm MDT