

\$5,000,000 - 15 Hwy 88 Ave, Fort Saskatchewan

MLS® #E4442861

\$5,000,000

0 Bedroom, 0.00 Bathroom,
Land Commercial on 0.00 Acres

Light Industrial Park, Fort Saskatchewan, AB

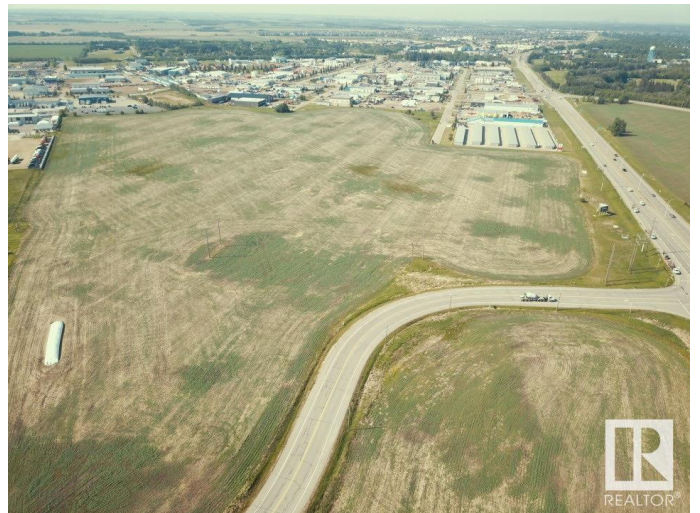
Incredible Development Opportunity! Prime 63.43-acre parcel located at the corner of Hwy 15 and 88 Ave in Fort Saskatchewan. This high-exposure property offers tremendous frontage and visibility in a rapidly growing area. Zoned Light Industrial District and designated as Major Employment Lands in the municipal development plan, it's ideally positioned for industrial or commercial development. Rare chance to invest in one of the region's most strategic locations with easy access to major transportation routes.

Essential Information

| | |
|-----------|-----------------|
| MLS® # | E4442861 |
| Price | \$5,000,000 |
| Bathrooms | 0.00 |
| Acres | 0.00 |
| Type | Land Commercial |
| Status | Active |

Community Information

| | |
|-------------|-----------------------|
| Address | 15 Hwy 88 Ave |
| Area | Fort Saskatchewan |
| Subdivision | Light Industrial Park |
| City | Fort Saskatchewan |
| County | ALBERTA |
| Province | AB |



Postal Code T8L 1I1

Additional Information

Date Listed June 17th, 2025

Days on Market 13

Zoning Zone 62

DATA IS DEEMED RELIABLE BUT IS NOT GUARANTEED ACCURATE BY THE REALTORS® ASSOCIATION OF EDMONTON. COPYRIGHT 2025 BY THE REALTORS® ASSOCIATION OF EDMONTON. ALL RIGHTS RESERVED.Trademarks are owned or controlled by the Canadian Real Estate Association (CREA) and identify real estate professionals who are members of CREA (REALTOR®, REALTORS®) and/or the quality of services they provide (MLS®, Multiple Listing Service®)

Listing information last updated on June 30th, 2025 at 8:32pm MDT