

Courtesy Of Alan H Gee Of RE/MAX Elite

## \$674,800 - 1914 159 Street, Edmonton

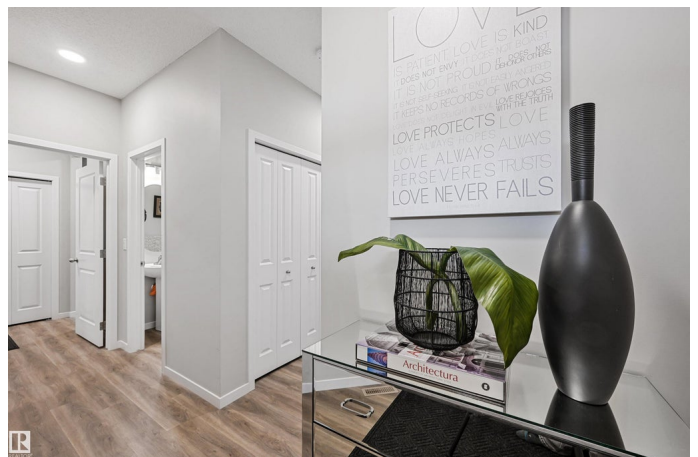
MLS® #E4444409

**\$674,800**

4 Bedroom, 3.50 Bathroom, 1,930 sqft  
Single Family on 0.00 Acres

Glenridding Ravine, Edmonton, AB

Better than NEW! Gorgeous upgraded Morrison 2 sty nestled on a quiet street in Glenridding Ravine, just steps to the pond & ravine. Approximately 2600sf of TOTAL living space as the basement is professionally finished! Upgrades galore w/over \$75,000 IN EXTRAS. Beautifully decorated. Dream kitchen w/upgraded Bosch appliances including a gas stove & two ovens. Butler's pantry w/a beverage cooler! Upgraded cabinetry & flooring throughout. Open concept plan is the perfect entertaining space. Plus main flr den. Upstairs find a bonus rm & laundry. 3 bdrms incl a luxurious primary suite featuring an ensuite w/an oversized tiled shower & dual sinks. LPV flooring in the bdrms! Lower level has a family rm, bdrm, 3 pc bath, storage & a flex area. Huge mudrm, lots of storage built-ins & a DBL garage w/extra depth on one side & can accommodate an extended cab pickup. Large exterior patio w/pergolal & NEW FENCING! Restaurants & shops close by incl Windermere Currents & Edm South Cm. Easy access to EIA & the Henday



Built in 2022

### Essential Information

MLS® #	E4444409
Price	\$674,800

Bedrooms	4
Bathrooms	3.50
Full Baths	3
Half Baths	1
Square Footage	1,930
Acres	0.00
Year Built	2022
Type	Single Family
Sub-Type	Detached Single Family
Style	2 Storey
Status	Active

### Community Information

Address	1914 159 Street
Area	Edmonton
Subdivision	Glenridding Ravine
City	Edmonton
County	ALBERTA
Province	AB
Postal Code	T6W 4X7

### Amenities

Amenities	Ceiling 9 ft., Detectors Smoke, Vinyl Windows, HRV System
Parking	Double Garage Attached

### Interior

Interior Features	ensuite bathroom
Appliances	Dishwasher-Built-In, Dryer, Garage Control, Garage Opener, Hood Fan, Oven-Built-In, Oven-Microwave, Refrigerator, Stove-Countertop Gas, Washer, Window Coverings, Wine/Beverage Cooler
Heating	Forced Air-1, Natural Gas
Fireplace	Yes
Fireplaces	Insert
Stories	3
Has Basement	Yes
Basement	Full, Finished

### Exterior

Exterior	Wood, Stone, Vinyl
----------	--------------------

Exterior Features	Airport Nearby, Back Lane, Public Transportation, Schools, Shopping Nearby
Roof	Asphalt Shingles
Construction	Wood, Stone, Vinyl
Foundation	Concrete Perimeter

### **School Information**

Elementary	DrArmour/JoanCarr
Middle	DonaldGetty/JoanCarr
High	DrAnderson/FM McCaffery

### **Additional Information**

Date Listed	June 26th, 2025
Days on Market	59
Zoning	Zone 56

DATA IS DEEMED RELIABLE BUT IS NOT GUARANTEED ACCURATE BY THE REALTORS® ASSOCIATION OF EDMONTON. COPYRIGHT 2025 BY THE REALTORS® ASSOCIATION OF EDMONTON. ALL RIGHTS RESERVED. Trademarks are owned or controlled by the Canadian Real Estate Association (CREA) and identify real estate professionals who are members of CREA (REALTOR®, REALTORS®) and/or the quality of services they provide (MLS®, Multiple Listing Service®)

Listing information last updated on August 24th, 2025 at 6:02pm MDT