

\$218,000 - 303 6925 199 Street, Edmonton

MLS® #E4444633

\$218,000

2 Bedroom, 2.00 Bathroom, 838 sqft

Condo / Townhouse on 0.00 Acres

Glastonbury, Edmonton, AB

Welcome to this beautifully updated 2 bed, 2 full bath condo in the sought-after west end! Featuring solid concrete & steel construction and heated underground parking, this bright unit offers comfort, durability, and convenience. This condo has in-suite laundry located within the kitchen with additional storage space. Kitchen has a breakfast bar to accommodate additional seating and provides additional counter space. This ideal layout has bedrooms on opposite sides of the living room which has access to the balcony. Primary has walk-through closet and 4 piece ensuite. Second bedroom has a walk-in closet and the main 4 piece bathroom is located across from this bedroom. Located just off Whitemud and Anthony Henday, you're minutes from West Edmonton Mall, Costco, schools, parks, golf, and two major shopping centres. Stay active with the on-site gym, and enjoy easy transit access with a bus stop right out front. Well-managed building, don't miss this incredible opportunity!

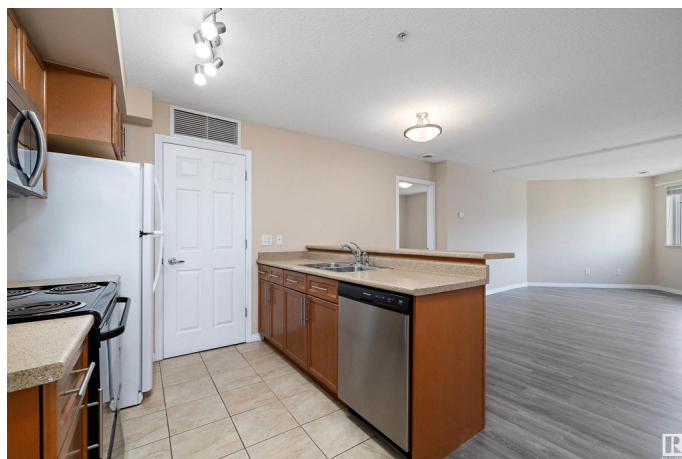
Built in 2007

Essential Information

MLS® # E4444633

Price \$218,000

Bedrooms 2



Bathrooms	2.00
Full Baths	2
Square Footage	838
Acres	0.00
Year Built	2007
Type	Condo / Townhouse
Sub-Type	Lowrise Apartment
Style	Single Level Apartment
Status	Active

Community Information

Address	303 6925 199 Street
Area	Edmonton
Subdivision	Glastonbury
City	Edmonton
County	ALBERTA
Province	AB
Postal Code	T5T 3X8

Amenities

Amenities	Exercise Room, Intercom, Parking-Visitor, Secured Parking, Security Door, Sprinkler System-Fire
Parking Spaces	2
Parking	Heated, Parkade, Underground

Interior

Interior Features	ensuite bathroom
Appliances	Dishwasher-Built-In, Dryer, Refrigerator, Stove-Electric, Washer, Window Coverings
Heating	Heat Pump, Natural Gas
# of Stories	4
Stories	1
Has Basement	Yes
Basement	None, No Basement

Exterior

Exterior	Steel, Hardie Board Siding
Exterior Features	Golf Nearby, Landscaped, Public Transportation, Schools, Shopping Nearby

Roof	Asphalt Shingles
Construction	Steel, Hardie Board Siding
Foundation	Concrete Perimeter

Additional Information

Date Listed	June 27th, 2025
Days on Market	4
Zoning	Zone 58
Condo Fee	\$414

DATA IS DEEMED RELIABLE BUT IS NOT GUARANTEED ACCURATE BY THE REALTORS® ASSOCIATION OF EDMONTON. COPYRIGHT 2025 BY THE REALTORS® ASSOCIATION OF EDMONTON. ALL RIGHTS RESERVED.Trademarks are owned or controlled by the Canadian Real Estate Association (CREA) and identify real estate professionals who are members of CREA (REALTOR®, REALTORS®) and/or the quality of services they provide (MLS®, Multiple Listing Service®)

Listing information last updated on July 1st, 2025 at 7:17pm MDT