

# \$875,000 - 9515 103a Avenue, Edmonton

MLS® #E4446525

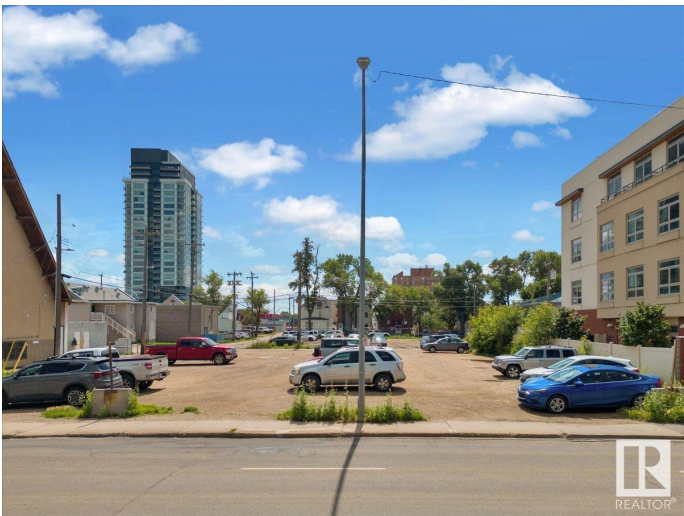
**\$875,000**

0 Bedroom, 0.00 Bathroom,  
Land Commercial on 0.00 Acres

Boyle Street, Edmonton, AB

Prime Development Opportunity in Edmonton’s core! This 10,771 sq ft vacant lot, zoned Medium-Scale Residential, is perfect for developers, builders, and investors. Located near Canada Place and the Ice District, this site offers excellent access to amenities, transit, and a vibrant neighborhood.

The property allows for multi-unit residential buildings ranging from 4 to 8 storeys (max height of 23 metres), ideal for creating modern living spaces with city views. Zoning also supports other commercial uses like temporary parking, food and drink services, health services, etc. With proximity to major offices, retail, entertainment, and easy transit access, these lots present a rare opportunity to build in one of Edmonton’s most desirable locations. Don’t miss out to explore this exceptional development opportunity!



## Essential Information

MLS® #	E4446525
Price	\$875,000
Bathrooms	0.00
Acres	0.00
Type	Land Commercial
Status	Active

## Community Information

Address	9515 103a Avenue
Area	Edmonton
Subdivision	Boyle Street
City	Edmonton
County	ALBERTA
Province	AB
Postal Code	T5H 0H5

### **Additional Information**

Date Listed	July 8th, 2025
Days on Market	12
Zoning	Zone 13

DATA IS DEEMED RELIABLE BUT IS NOT GUARANTEED ACCURATE BY THE REALTORS® ASSOCIATION OF EDMONTON. COPYRIGHT 2025 BY THE REALTORS® ASSOCIATION OF EDMONTON. ALL RIGHTS RESERVED. Trademarks are owned or controlled by the Canadian Real Estate Association (CREA) and identify real estate professionals who are members of CREA (REALTOR®, REALTORS®) and/or the quality of services they provide (MLS®, Multiple Listing Service®)

Listing information last updated on July 20th, 2025 at 10:02am MDT