



FOR LEASE

GORMAN
LANDING

MaxWell

Commercial



ROMI SARNA AND
ASSOCIATES

1830 153 Avenue, Edmonton, AB

The information contained herein was obtained from sources deemed to be reliable and is believed to be true; it has not been verified and as such, cannot be warranted nor form a part of any future contract. All measurements need to be independently verified by the Purchaser/Tenant.



Welcome to Gorman Landing, where modern living meets convenience in the heart of the city! Nestled at the intersection of Gorman Street and 18th Street, our vibrant community offers a perfect blend of urban energy and tranquility.

Gorman Landing is easily accessible, ensuring that you are always well-connected to the pulse of the city. As you step into our neighborhood, you'll discover the perfect harmony between city life and comfort.

Romi Sarna & Associates

AERIAL MAP



HOUSEHOLD INCOME



Earning up to \$80,000	39.25%
\$80,000 - \$150,000	42.50%
\$150,000+	18.25%



POPULATION

>19 years old	16.40%
20-34 years	36.10%
35-54 years	25.70%
55 years+	21.80%

AERIAL MAP



PROPERTY DETAILS



Property Type/ Transaction Type: For Lease

Address: 1830 153 Avenue, Edmonton, AB

Land Use/Zoning: CN

Net Lease Rate Main Starting @ \$37.00 SF/Annum

Second Floor Starting @ \$30.00 SF/Annum

OP Cost: \$12.00/sq.ft/annum (EST 2022)*

PERFECT FOR



RESTAURANTS



PROFESSIONALS



MEDICAL/HEALTHCARE



STUDIO



SHOPPING



VETERINARIAN



FINANCE

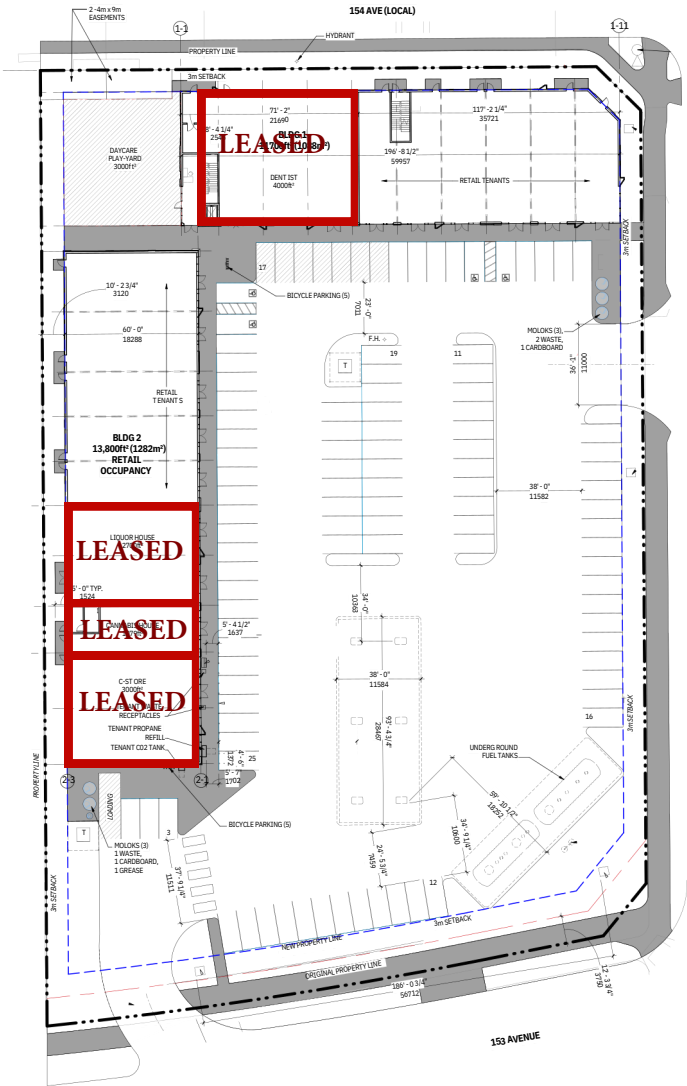


SMALL BUSINESSES

*Includes property taxes, common area, maintenance insurance and management fees

SITE PLANS

WELCOME TO
GORMAN
LANDING



The information contained herein was obtained from sources deemed to be reliable and is believed to be true; it has not been verified and as such, cannot be warranted nor form a part of any future contract. All measurements need to be independently verified by the Purchaser/Tenant.



ROMI SARNA
AND
ASSOCIATES

Contact Us



4107 99 Street Edmonton



(780)-450-6300



romi@romisarna.ca

